

MONTHLY CLIMATOLOGICAL SUMMARY for FEB. 2019

NAME: FOGC HOME CITY: BOYNTON BEACH STATE: FLORIDA
 ELEV: 29 ft LAT: 26° 29' 09" N LONG: 80° 09' 34" W

TEMPERATURE (°F), RAIN (in), WIND SPEED (mph)

DAY	MEAN TEMP	HIGH	TIME	LOW	TIME	HEAT DEG DAYS	COOL DEG DAYS	RAIN	AVG WIND SPEED	HIGH	TIME	DOM DIR
1	69.2	72.5	4:00p	65.7	12:30a	0.0	4.2	0.00	1.0	13.0	11:00a	ESE
2	70.6	78.5	1:00p	64.1	7:30a	0.0	5.7	0.00	1.8	23.0	5:00p	SE
3	72.3	81.9	3:00p	63.9	7:30a	0.0	7.3	0.00	1.6	13.0	2:00p	N
4	67.0	72.3	5:30p	62.4	12:00m	0.2	2.2	0.00	1.0	10.0	2:00p	N
5	68.1	78.1	2:30p	60.4	5:30a	1.2	4.3	0.00	1.0	11.0	2:00p	NE
6	68.7	76.3	2:30p	63.0	7:30a	0.3	3.8	0.00	1.1	14.0	12:30p	SE
7	69.7	76.8	3:00p	62.1	5:30a	0.5	5.2	0.00	1.5	16.0	11:00a	SE
8	71.5	78.0	4:30p	64.9	12:00m	0.0	6.5	0.68	0.8	11.0	11:30a	SE
9	70.3	78.1	2:00p	63.3	7:30a	0.2	5.6	0.05	1.3	18.0	5:00p	NE
10	74.2	78.3	2:30p	71.4	12:30a	0.0	9.2	0.00	3.6	20.0	1:00a	SE
11	75.0	78.6	1:30p	71.0	6:30a	0.0	10.0	0.01	5.2	24.0	2:00p	SE
12	76.3	81.1	1:30p	71.4	11:30p	0.0	11.3	0.00	5.4	28.0	2:00p	SSE
13	64.8	71.9	1:00a	57.8	12:00m	2.1	1.9	0.41	4.5	21.0	12:00p	NNE
14	66.6	76.5	3:00p	57.0	2:30a	2.6	4.2	0.00	3.4	18.0	11:30a	NE
15	70.3	79.4	12:30p	62.4	6:30a	0.4	5.7	0.00	1.3	12.0	5:00p	SE
16	71.2	81.6	4:30p	59.9	7:00a	0.9	7.1	0.00	1.9	18.0	3:00p	SSE
17	74.3	82.4	2:00p	65.3	6:00a	0.0	9.3	0.00	3.0	19.0	1:30p	SSE
18	78.7	84.4	1:00p	74.3	7:30a	0.0	13.7	0.00	3.8	17.0	3:30p	SSE
19	77.0	81.8	12:30p	71.7	6:30a	0.0	12.0	0.00	3.9	23.0	3:30p	SE
20	77.4	81.0	4:00p	73.2	4:30a	0.0	12.4	0.05	7.1	28.0	10:00a	SE
21	77.7	81.7	2:30p	74.9	6:00a	0.0	12.7	0.00	7.0	22.0	9:30a	SE
22	77.4	82.6	1:00p	70.8	7:00a	0.0	12.4	0.00	3.6	18.0	2:30p	SE
23	77.8	81.8	1:00p	74.7	5:00a	0.0	12.8	0.00	5.0	24.0	9:30a	SE
24	78.6	87.1	3:00p	71.3	6:30a	0.0	13.6	0.00	2.4	17.0	10:00a	W
25	74.2	79.1	12:00p	69.1	7:30a	0.0	9.2	0.00	3.5	22.0	3:00p	NE
26	73.1	78.4	2:00p	68.9	11:00p	0.0	8.1	3.05	2.2	18.0	3:00p	ESE
27	73.9	83.8	4:00p	67.4	3:00a	0.0	8.9	0.10	2.6	17.0	5:30p	SE
28	71.1	79.8	4:00p	65.4	7:30a	0.0	6.1	0.00	2.0	13.0	3:30a	NW
	72.7	87.1	24	57.0	14	8.4	225.4	4.35	2.9	28.0	12	SE

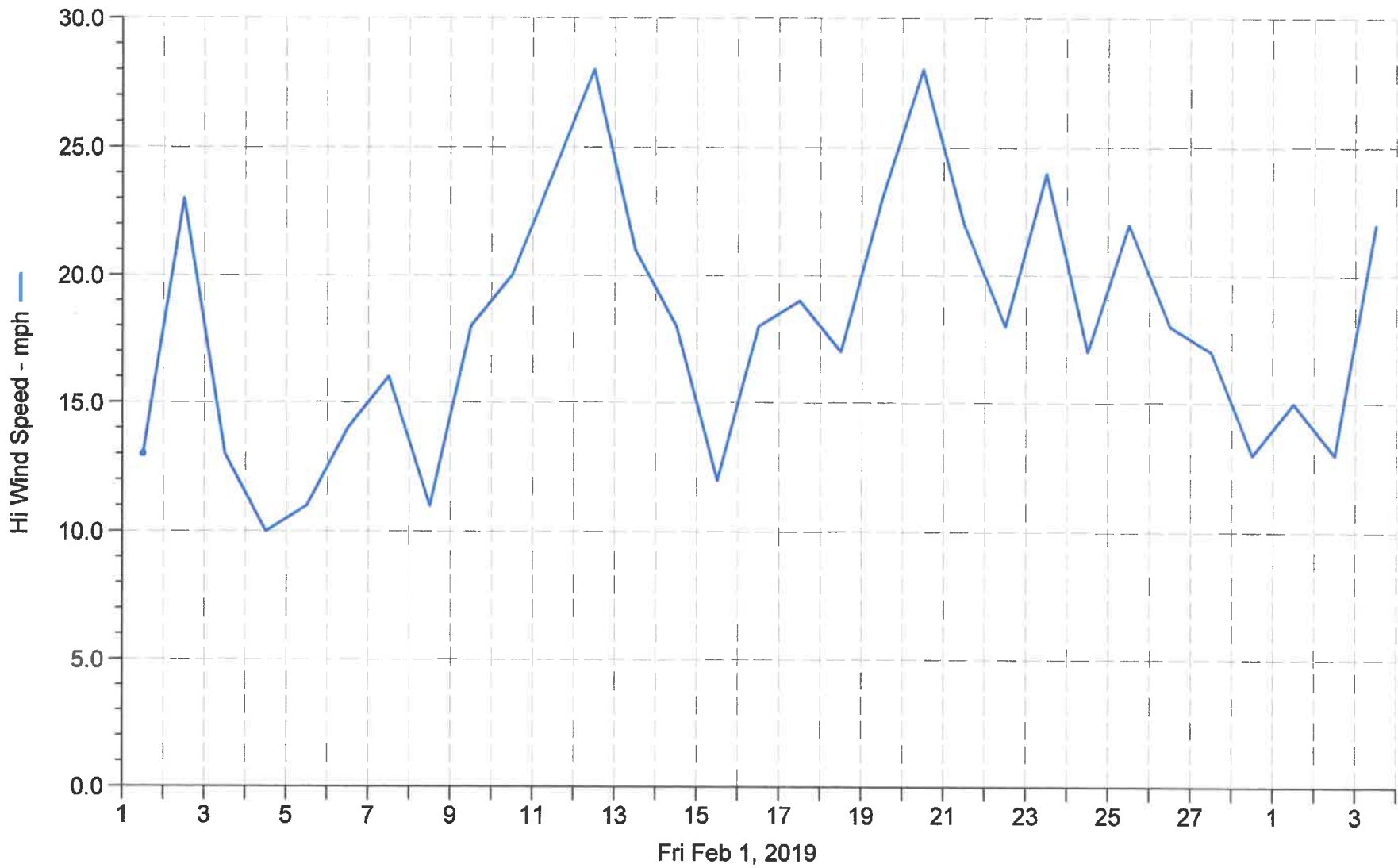
Max >= 90.0: 0
 Max <= 32.0: 0
 Min <= 32.0: 0
 Min <= 0.0: 0

Max Rain: 3.05 ON 02/26/19

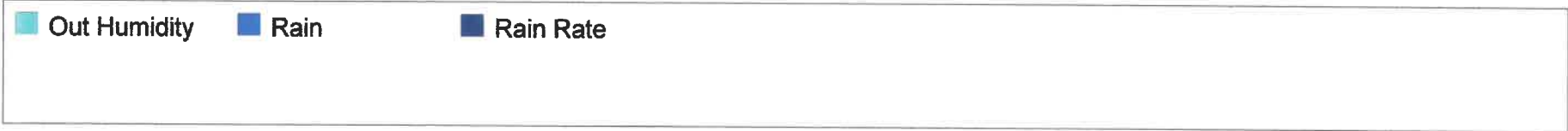
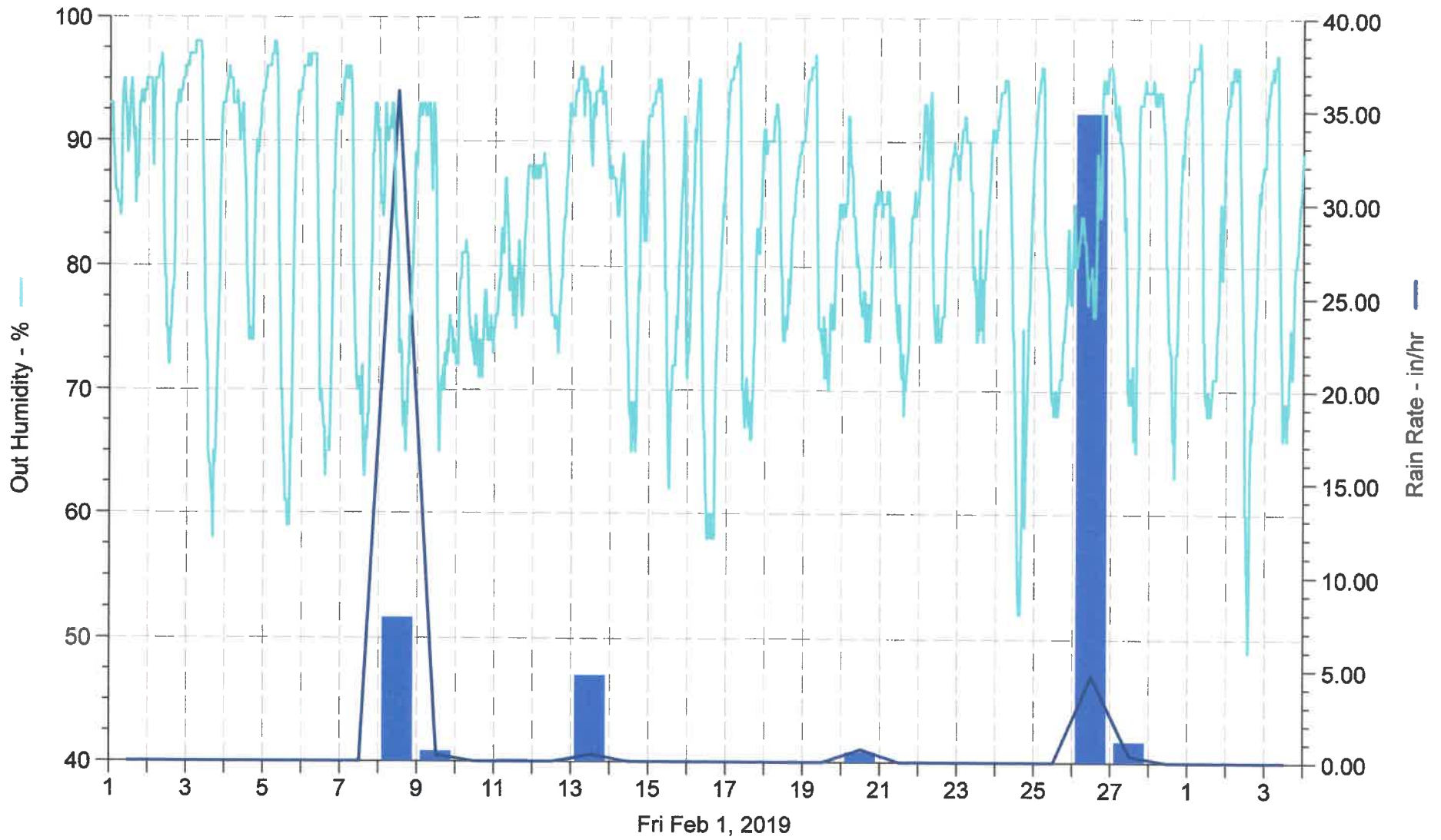
Days of Rain: 6 (>.01 in) 3 (>.1 in) 1 (>1 in)

Heat Base: 65.0 Cool Base: 65.0 Method: Integration

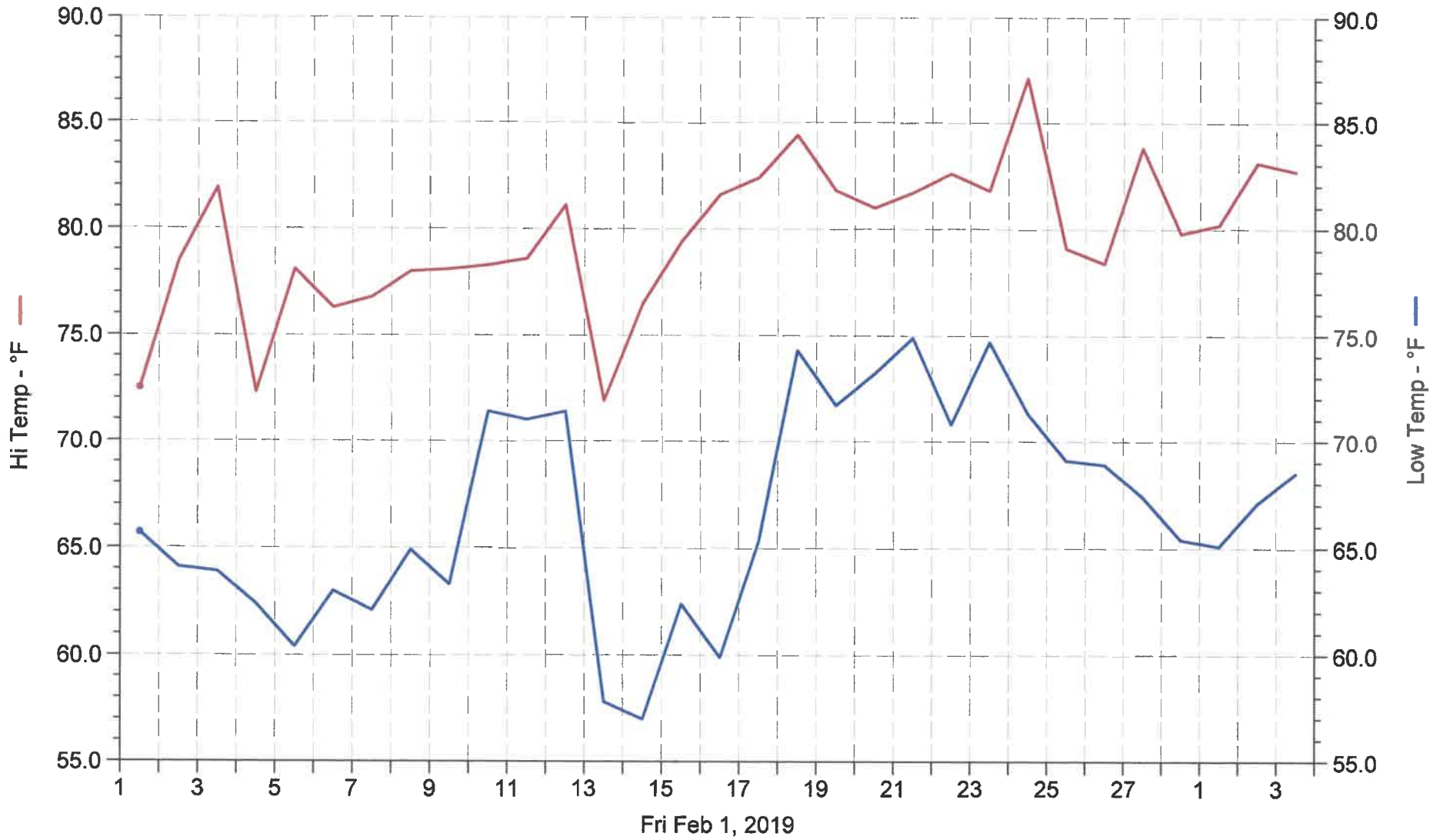
FOGC HOME



FOGC HOME

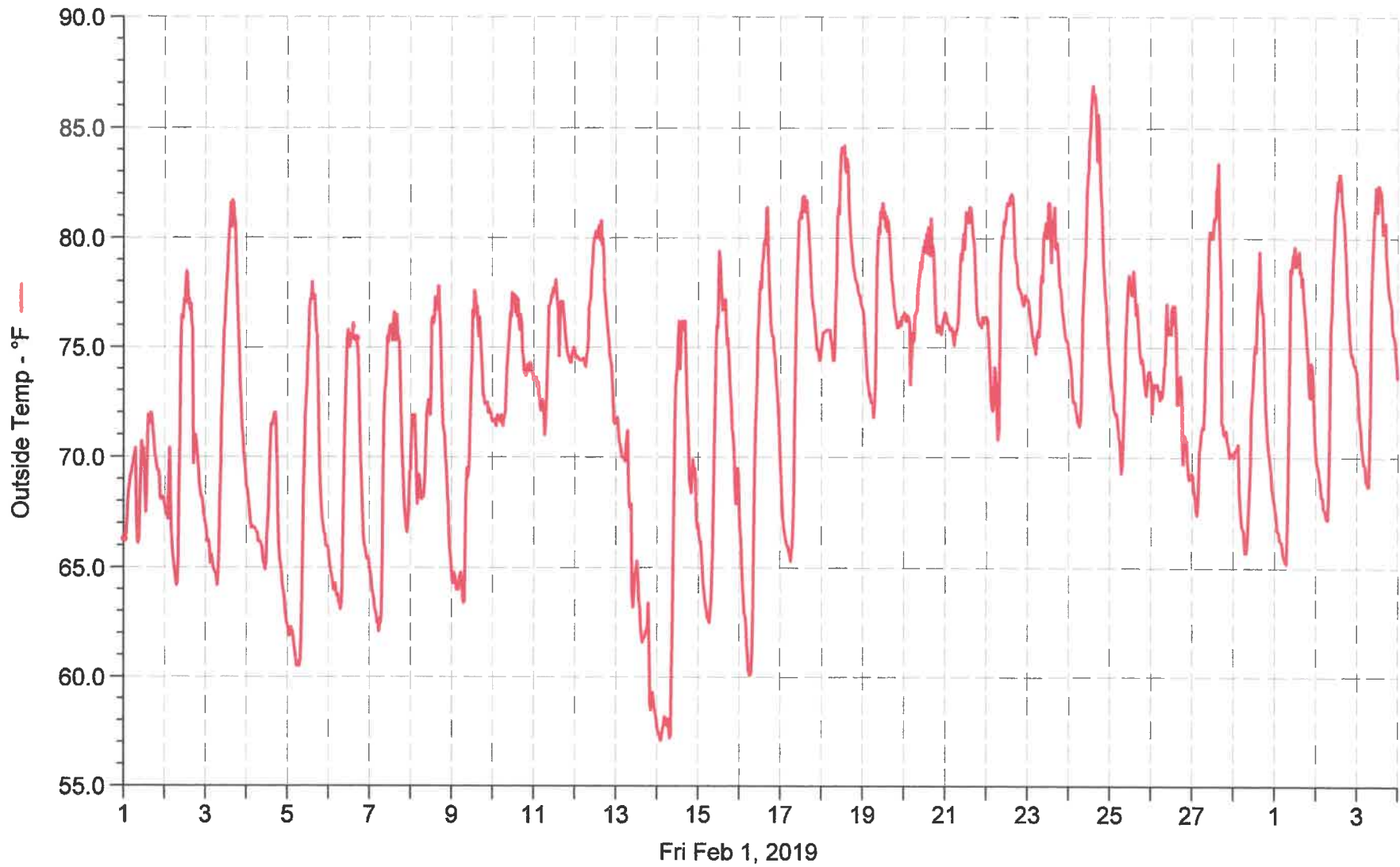


FOGC HOME



Hi Temp Low Temp

FOGC HOME



■ Outside Temp